

Pip Christmass arts

Email pip.christmass@wanews.com.au



Nature, with the mind's eye

Bec Juniper's colourful aerial views of WA's majestic landscape and water are drawn from memory, writes **Pip Christmass**

For painter Bec Juniper, the daughter of revered WA artist Robert Juniper who died in 2012, the harsh beauty of the State's landscape is of perennial inspiration.

Juniper has called her latest exhibition *The Personal Cult of the Land*, a reference to her deep connection to and love of this State's waterways, rock formations and harsh bushland.

Consisting primarily of aerial views of land and water drawn from memory, Juniper's works are an experiment in colour, perspective and scale.

"There's a sense of being in a place where you are kind of dwarfed by nature and feeling almost insignificant in the face of that majestic scale," Juniper says of the landscapes that inspired her paintings.

"Everybody feels like that, I think, when they're sitting on the beach or looking at the stars at night. I'm always surprised by the number of people who live strictly urban lives and haven't been out to look at these big natural landscapes. Once you do get out there, though, you can't help but be affected by it. It's

very powerful. From a distance, this landscape looks soft, almost. But when you get down there, it's really harsh — but no less beautiful."

Juniper says her love of the WA landscape dates back to her childhood, when she and brother Ben — also an artist — ventured out to explore nature with their father.

"Dad obviously talked about the landscape a lot. In the 1970s we'd go and fossick, looking for things that had been discarded in ghost towns.

"You'd find things that weren't particularly special but they'd be a little reminder of what had been there. A bit of broken crockery, a bottle that had melted in the sun. I'm sure that's all inside me and comes out in my work."

Juniper's aerial works are rich in colour, slightly abstracted, poetic and surreal — the consequence of not working from a realistic photograph but rather from following the image in her mind's eye.

"The surreal aspect comes from me being in my studio and remembering," she explains. "I listen to music and paint, so it's all very intuitive. The aerial



Love of the land: Bec Juniper with some of her work at Jah Roc Galleries.

view is a reference to the amount of flying so many of us do across Australia. From the air you do get a sense of the age of this place, the time that's passed, the erosion and sedimentation."

Juniper says she starts with a basic idea but then the paintings begin to take on a life and a rhythm of their own. She works on every side of her canvas so that there is, in effect, no "right" way to hang the painting.

Juniper gave up signing the front corner of her paintings several years ago. She signs on the reverse of her canvases.

"You can turn a lot of my canvases around and they'll still look balanced," she explains. "You can feel free with my work to look at it from any side, turn it around if you get bored with it hanging in one direction."

While Juniper is based in Hamilton Hill — after 12 years of living in Margaret River — and Ben is working out of a studio in Subiaco, the siblings are in regular contact, despite moving in different circles.

"We've both obviously learnt and picked up things from dad but we each have a different way of interpreting that," Juniper

says. "It's been two years since dad died and it's still early days; we're still coming out of that shadow and taking on that legacy.

"Maybe it's the memory of dad, maybe it's my own maturing as an artist, but I have experienced a really warm, open reception from people to my work. They seem to be embracing the fact that we are both artists in our own right and continuing on that line."

■ *The Personal Cult of the Land* is at Jah Roc Galleries in Margaret River until next Saturday.

Arts Directory

Art Courses

ART CLASSES

PERTH ART SCHOOL
Phone 9328 1050
www.perthartschool.com

Atwell Gallery

Push your creative side and try something different at our **SUMMER SCHOOL** January 10-25, 2015 "Colour & Movement" An exciting array of workshops (from 3 hours to 3 days) with 10 popular Perth artists atwellarts.weebly.com

Blues



the northshore
The Northshore Tavern, Hillarys
Home of Northern Blues N Roots WA
www.northernbluesnroots.com.au
Thursday 5 February 2015
7.30-11pm **IVAN ZAR, ON THE LEVEL, MATTYTWALL**
Door entry \$10/\$15
Dinner Bookings on 9307 4511
bookings@thenorthshoretavern.com.au

Concerts

Join Margaret Pride & Members of Collegium Symphonic Chorus in

GREASE

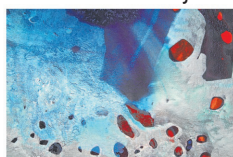
Methodist Ladies College
Rehearsals start 26th Jan 7.30pm
Performance: Sat 7th Feb

collegiumsymphonicchorus.com.au
mazndave@iinet.net.au

Exhibitions

BEC JUNIPER

"Personal Cult Of The Land"
27th December - 17th January



Jahroc Galleries
83 Bussell Hwy, Margaret River
9758 7200 info@jahroc.com.au
Open daily 10am to 5pm
www.jahroc.com.au

City of Gosnells Community Art Exhibition and Awards 2015
Entries Now Open
www.gosnells.wa.gov.au
Entries close 4pm 9 Feb 2015
Art Collection 3 & 4 March 2015

METAMORPHOSIS ART GALLERY
JANA VODESIL-BARUFFI
www.janavodesil.com
www.metamorphosisartgallery.com
24 Yampi Way Willetton 0411 476 972

davidgilesartstudios.com.au



DAVID GILES ART GALLERY
49B High St Fremantle
Open Tue-Sun 11-5

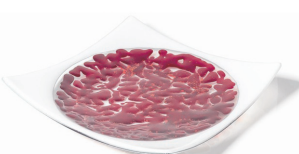
STUDIO ELEVEN
11 Captains Lane Fremantle
Open Thu-Sun 11-4

John Cartwright Art Gallery



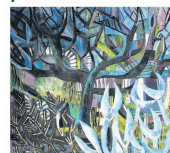
145 Central Ave, Mt Lawley
Open 7 days : 9271 1360

NADA MURPHY



OPEN STUDIO
January 11th, 2 - 6pm
Other times by appointment
10 Holland St, Wembley
Ph 0400 031 952 nadamurphy.com.au

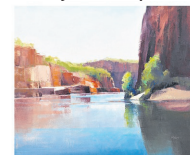
PERTH CITY Summer in the City
A mixed exhibition of works by our stable of artists



1/137 St Georges Tce Perth
6465 4314
www.lintonandkay.com.au
Open Mon-Sat 10am-5pm
Sun 11am-4pm

YALLINGUP GALLERIES

Garden Arts Studio
Dec 27 - Jan 7
Sam Broadhurst
Rob Malcolm
John Lacey



31 Murrinup Dve Yallingup
www.yallingupgalleries.com.au
tel: 97552372 Open 10-5pm

Galleries

Always at Monet Gallery

Wide range of lovely, affordable paintings by well-known WA artists. Enjoy a browse. Tea/coffee weekends
Hrs: Fri/Sat/Sun 12-6, Thurs by appoint.
www.monetgallery.net.au
85 Gt Eastern Highway, South Guildford

INDIGENART-Mossenson Galleries



115 Hay St, Subiaco Ph 93882899
Tues- Sat 11am - 4pm
or by appointment Ph 0413803998
www.mossensongalleries.com.au



22 MEADOW ST, GUILDFORD
Phone : 9279 9859
www.guildfordpotters.webs.com
Mon-Fri 9.30am-3pm
Sat, Sun & Public Holidays 10am-4.30pm
Glass exhibition by Marion Johns

General Arts

LARRY MITCHELL



"The Basin" Rottneft
Limited edition print 1800mm x 660mm
available exclusively from
YALLINGUP GALLERIES
9755 2372
contact@yallingupgalleries.com.au
Part proceeds to the whale shark tagging programme West Papua
www.yallingupgalleries.com.au

Internet Sites

ATWELL HOUSE

Community Arts Centre & Gallery
Canning Hwy/Nth Lake Rd Alfred Cove
Art Exhibitions & Classes
www.atwellarts.com